



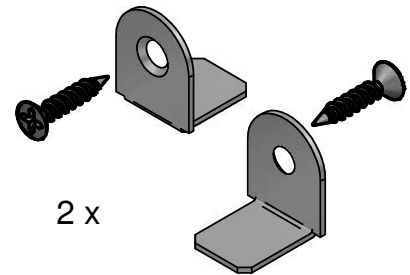
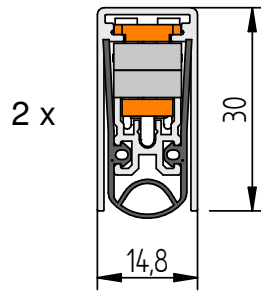
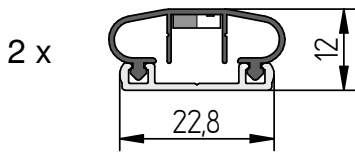
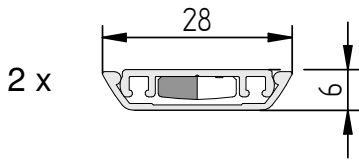
Rundumdicht Pivot L-15 Set
Montageanleitung



Lieferumfang / Scope of delivery

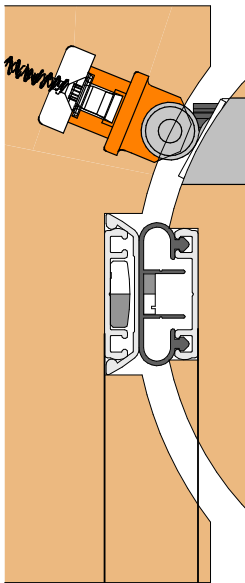
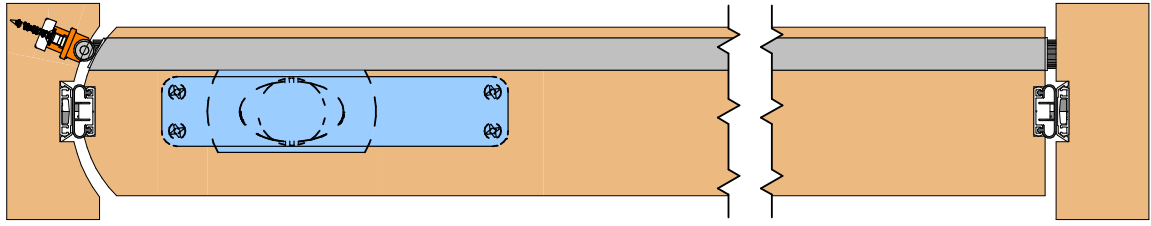
Magnetleiste / Magnetic bar

Schall-Ex® L-15/30 WS PIVOT

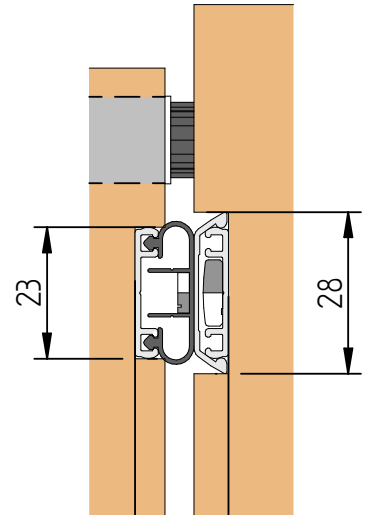


Art.-Nr.					
5817	Rundumdicht Pivot L-15	1517 Rollenhalter vormontiert / Premounted roll holder	3009 Befestigungs- halter / Moun- ting bracket	3359 Spax Schraube 3,0 x 30 / Spax Screw 3,0 x 30	1123 Hilfswerkzeug / Auxiliary tool
	Set	2 Stück / pcs	2 Stück / pcs	2 Stück / pcs	1 Stück / pc

1



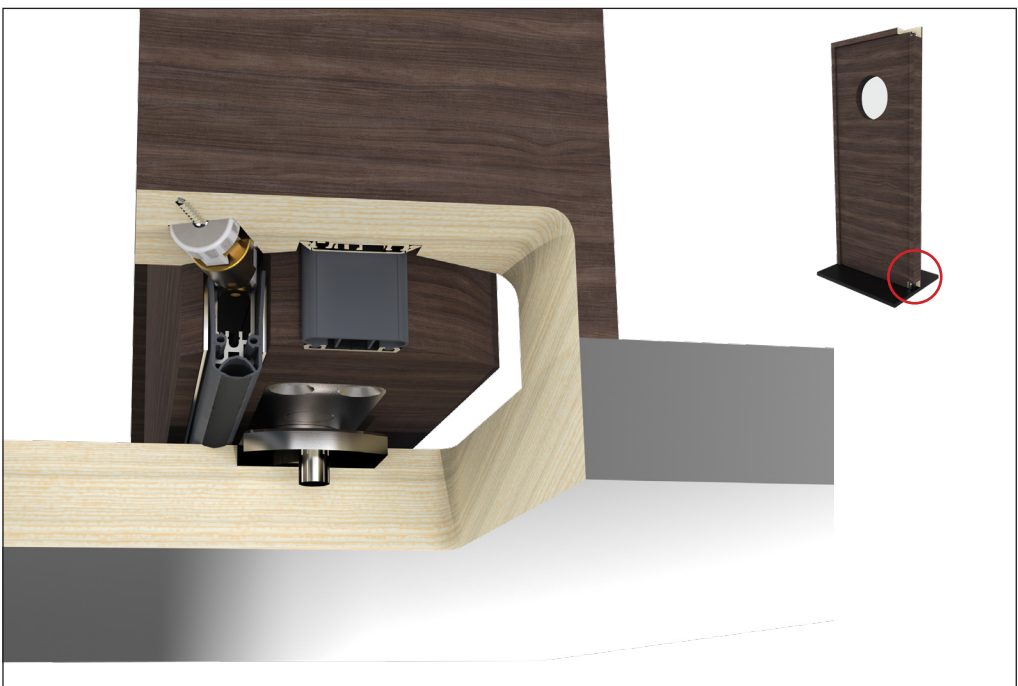
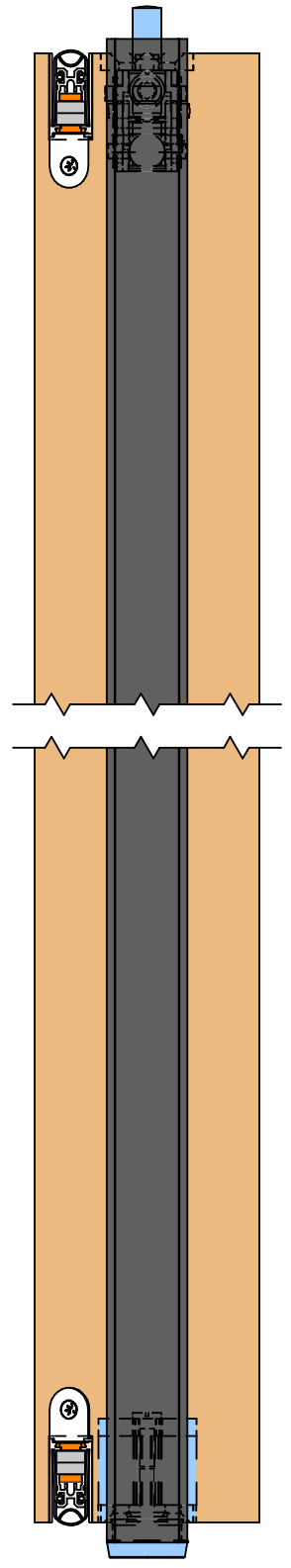
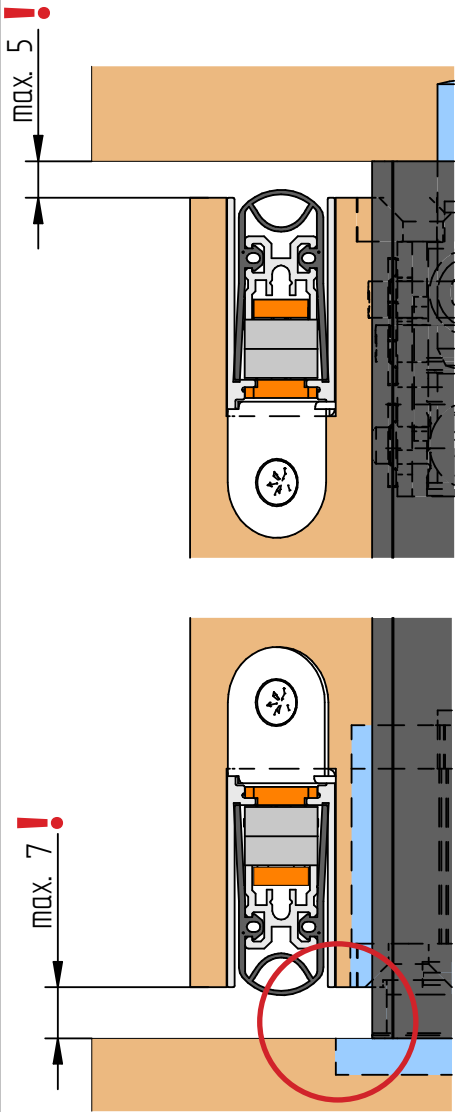
16,5 - 18,5



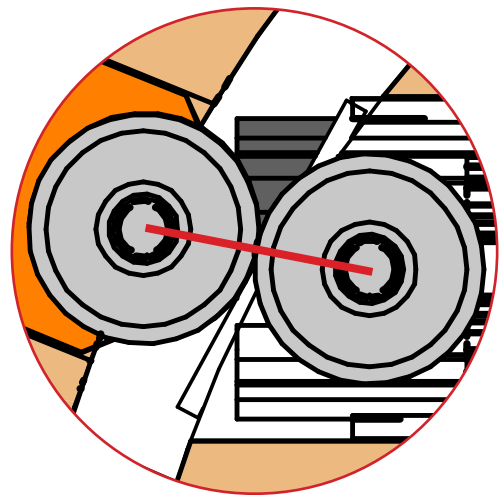
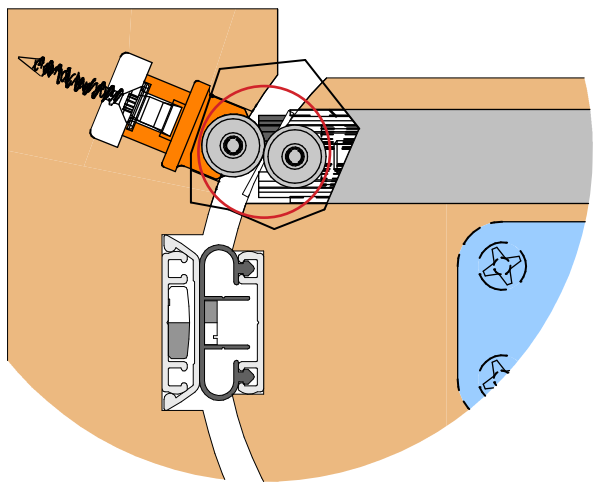
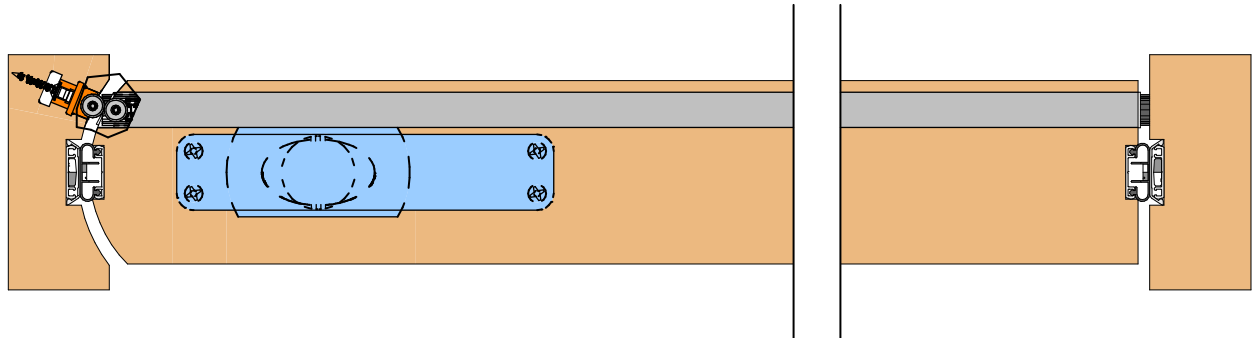
16,5 - 18,5



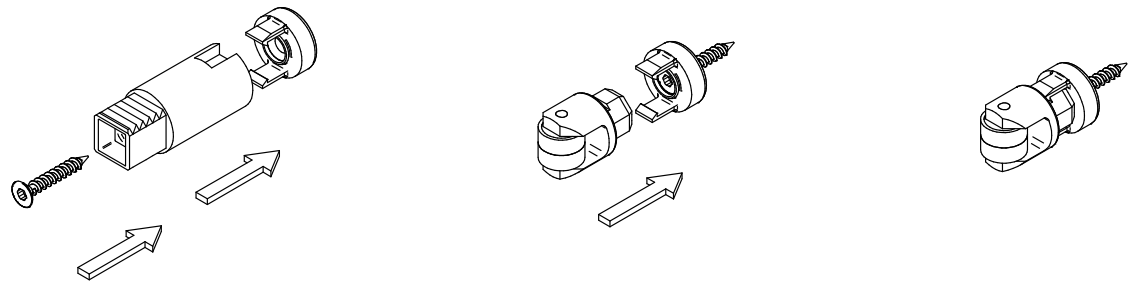
2



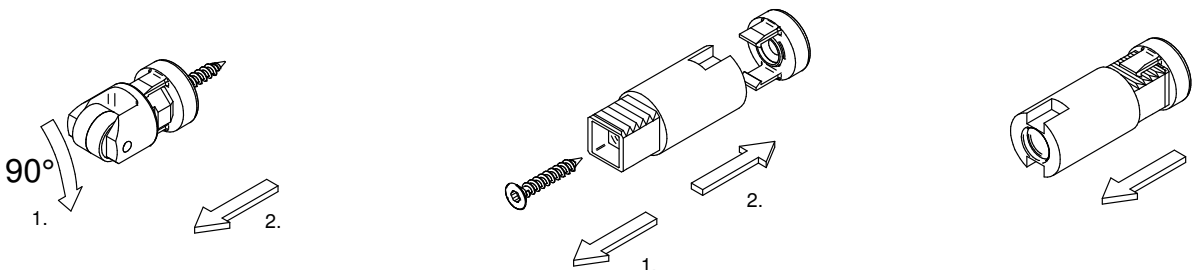
3



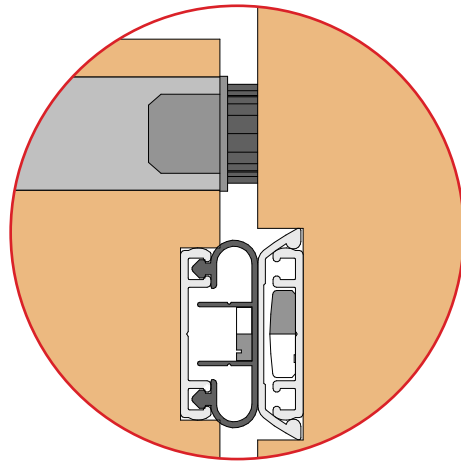
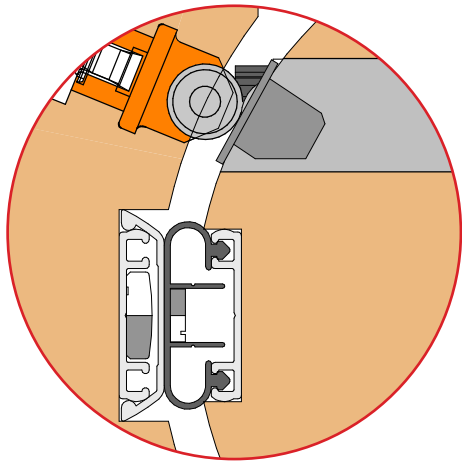
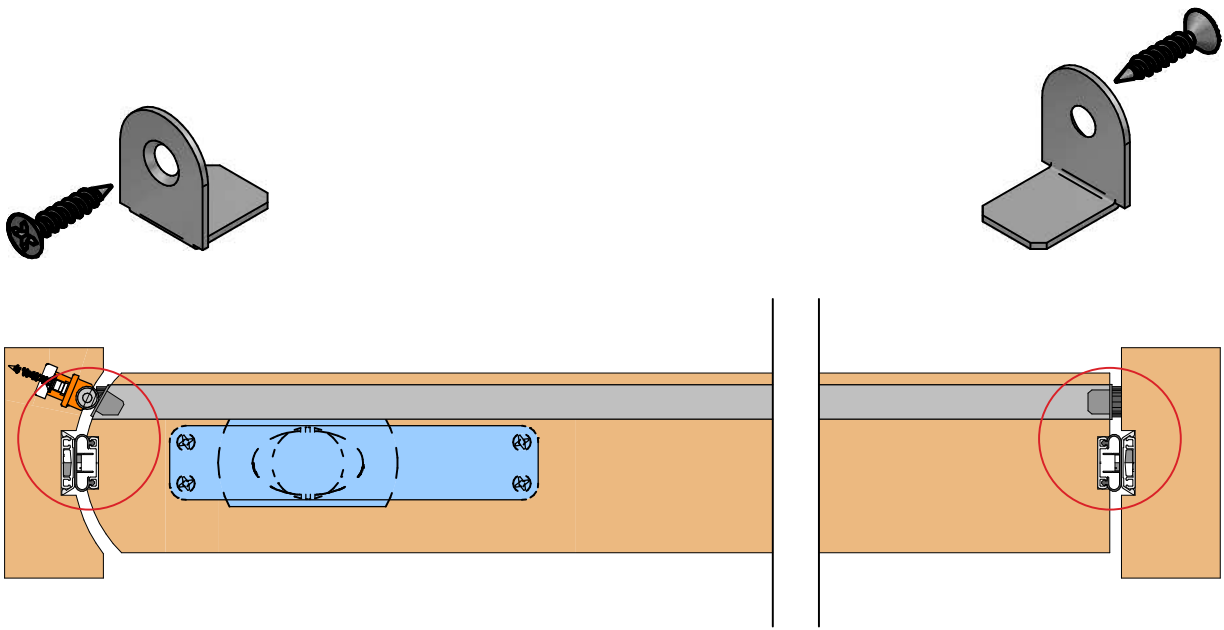
Montage / Assembly



Demontage / Disassembly



4



Athmer oHG
 Sophienhammer
 59757 Arnsberg-Müschede
 Tel. +49 2932 477-500

info@athmer.com
www.athmer.com