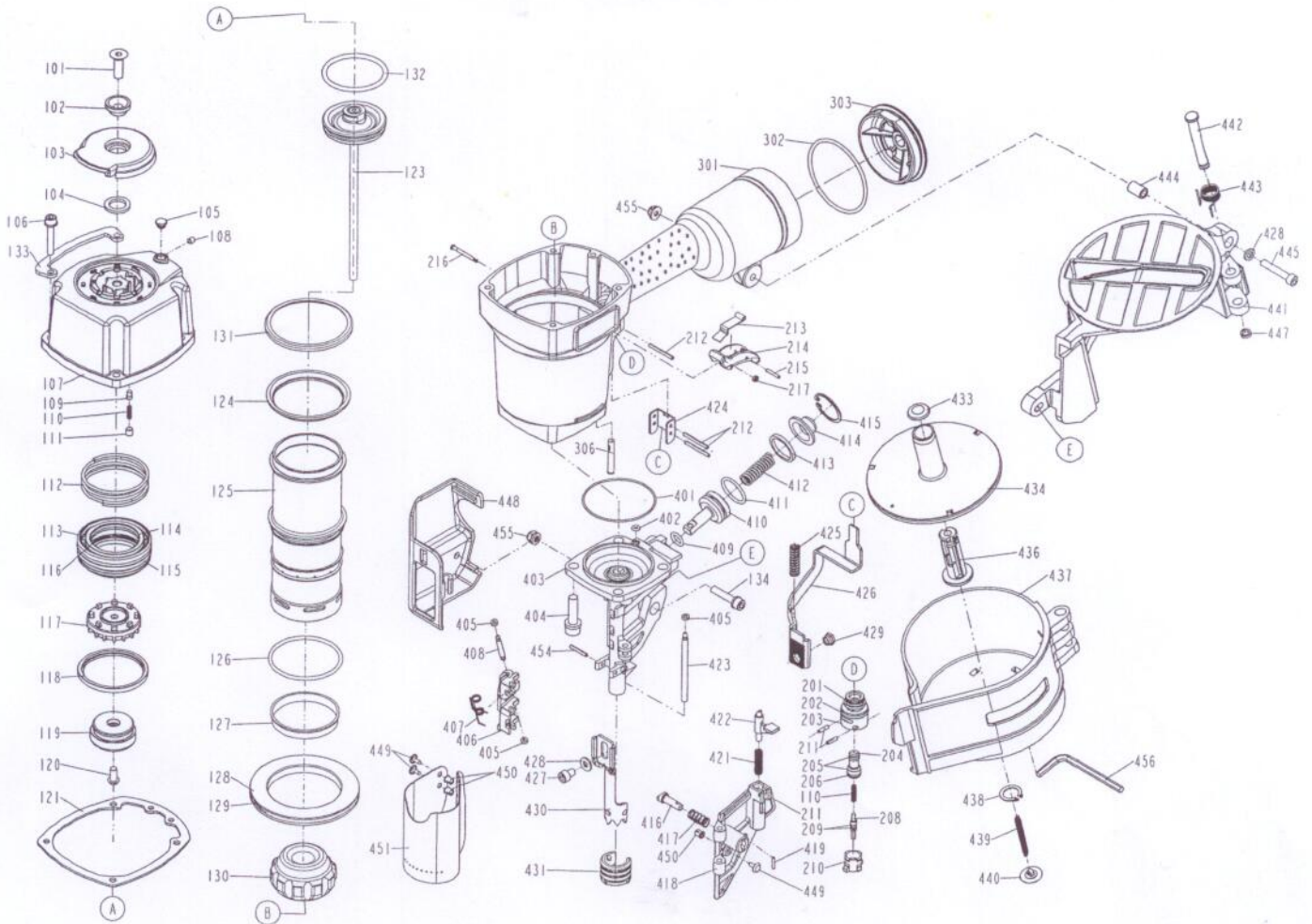


# DIAGRAM OF C1690C



ITEM NO.	PART NO.	DESCRIPTION	ITEM NO.	PART NO.	DESCRIPTION	ITEM NO.	PART NO.	DESCRIPTION
101	2040103-05010-2	COUNTER SUNK SCREW	205	2041100-01070-0	O - RING	421	11311-0794701-1	LATCH SPRING
102	1136B-0374701-1	DEFLECTOR PAD	206	2041100-01030-0	O - RING	422	11310-0794701-1	DOOR LATCH
103	11371-0374701-2	DEFLECTOR	208	11375-0084701-1	PLUNGER	423	11362-0794701-1	DOOR SHAFT PIN
104	1135G-0374701-1	RUBBER PAD	209	2041102-01030-0	O - RING	424	11338-0374701-1	SAFETY GUIDE
105	1135S-0350001-1	GROMMET	210	11373-0084701-1	TRIGGER VALVE HEAD	425	11337-0794701-1	SAFETY SPRING
107	11369-0374303-1	CAP	211	2040400-05060-0	SPRING PIN	426	11332-0794701-1	SAFETY B
108	2040104-03010-0	HEX.SOC.HD.SCREW	212	2040400-05160-0	SPRING PIN	427	2040101-04180-0	HEX.SOX.HD.BOLT
109	1136C-0374701-1	POSITIONING AXIS	213	11317-0374701-2	SECONDARY TRIGGER	428	2040202-04010-0	FLAT WASHER
110	11376-0254701-1	SPRING	214	11316-0374701-1	TRIGGER	429	1135K-0374701-1	SCREW FIXING SEAT
111	2040104-04010-0	HEX.SOC.HD.SCREW	215	2040400-04070-0	SPRING PIN	430	11331-0794701-2	SAFETY A
112	11360-0374701-3	COMPRESSION SPRING	216	11318-0374701-1	TRIGGER PIVOT PIN	431	11339-0374701-1	PROTECTIVE CASING
113	11368-0370002-3	HD.VALVE PISTON	217	1131D-0460001-1	URETHANE RETAINER	433	1134N-0250002-1	SPRING BASE A
114	2041109-05070-0	O - RING	301	11230-0790601-1	GUN BODY UNIT	434	11259-0790001-1	NAIL BRACKET UNIT
115	2041108-07021-0	O - RING	302	2041106-07010-0	O - RING	436	11357-0794701-1	ADJUST POST
116	2041109-05080-0	O - RING	303	11346-0374301-1	END CAP	437	11354-0794701-1	MAGAZINE CASE
117	1136N-0370001-2	VALVE	306	1136U-0794701-1	FILTER	438	2040301-11010-0	S - RING
118	11399-0370001-1	COLLAR	401	2041104-07010-0	O - RING	439	11328-0794701-1	PULL SPRING
119	11370-0370002-1	SEAL	402	2041100-01020-0	O - RING	440	1134M-0250002-1	SPRING BASE
120	2040102-04010-0	HALF ROUND HD.HEX.BOLT	403	11382-0794701-3	NOSE PIECE	441	11355-0794701-2	MAGAZINE COVER
121	11302-0374701-3	CYLINDER CAP SEAL	404	2040100-05010-2	BOLT ASSY	442	1132V-0794701-1	PIN
123	11204-0790006-1	DRIVER UNIT	405	1135H-0790001-1	PU RETAINER	443	11315-0794701-1	SPRING
124	1135J-0370001-2	PRESS RING	406	11306-0794701-3	FEED FINGER	444	11398-0794701-1	LATCH SPRING BUSHING A
125	11320-0370003-1	CYLINDER	407	11307-0790001-1	FEED FINGER SPRING	445	2040101-04190-0	HEX.SOC.HD.BOLT
126	2041101-06010-0	O - RING	408	11365-0794701-1	PIN FEED PISTON	447	1131G-0794701-1	FIXED RING
127	11322-0370002-1	CYLINDER RING	409	2041100-01090-0	O - RING	448	1134C-0794701-1	SAFETY COVER
128	11321-0370001-1	CYLINDER SPACER	410	11364-0794701-1	FEED PISTON	449	11324-0254701-1	FIXED PIN
129	2041101-09010-0	O - RING	411	2041104-03020-0	O - RING	450	1131G-0254701-1	FIXED RING
130	11327-0370001-4	BUMPER	412	1133F-0794701-1	FEED PISTON SPRING	451	11383-0790001-1	MUZZLE PROTECTOR
131	1136D-0374701-1	PRESS RING	413	1134W-0790001-1	FEED BUMPER	454	2040400-05100-0	SPRING PIN
132	2041107-06010-0	O-RING	414	11366-0794701-1	FEED PISTON CAP	455	2040501-04010-0	BOLT CAP
134	2040100-04030-0	BOLT ASSY	415	2040300-04010-0	C - RING	456	2040900-04030-1	WRENCH.HEX HEAD
201	2041104-02020-0	O - RING	416	11358-0794701-2	NAIL STOP			
202	2041104-02030-0	O - RING	417	1133C-0790001-2	STOPPER FINGER SPRING			
203	11374-0084701-1	PLUNGER CAP	418	11361-0794701-3	DOOR			
204	1133S-0250001-1	VALVE PLUNGER	419	2040401-04060-0	SPIRAL PINS			