

H115.0558 Teleskopstation / Station télescopique
Montageanleitung / Instructions de montage
Assembly instruction



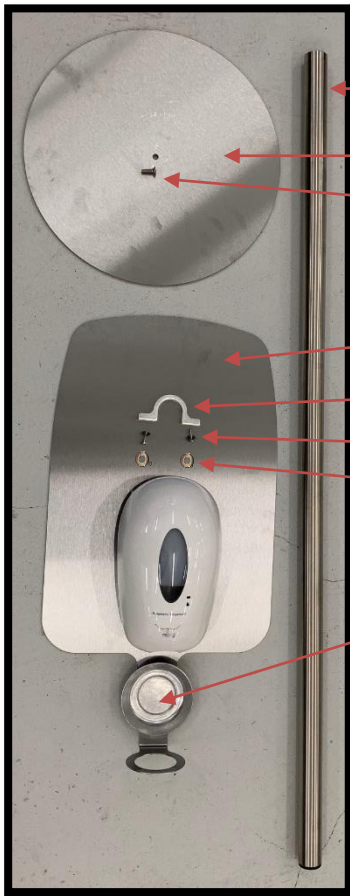
Ernst Hausammann & Co. AG
CH-8010 Zürich
Rautstrasse 19, Postfach
Tel 0800 815 844
Fax +41 44 491 22 11
info@hausammann.com
www.hausammann.com





Ernst Hausammann & Co. AG

CH-8010 Zürich
Rautistrasse 19, Postfach
Tel 0800 815 844
Fax +41 44 491 22 11
info@hausammann.com
www.hausammann.com

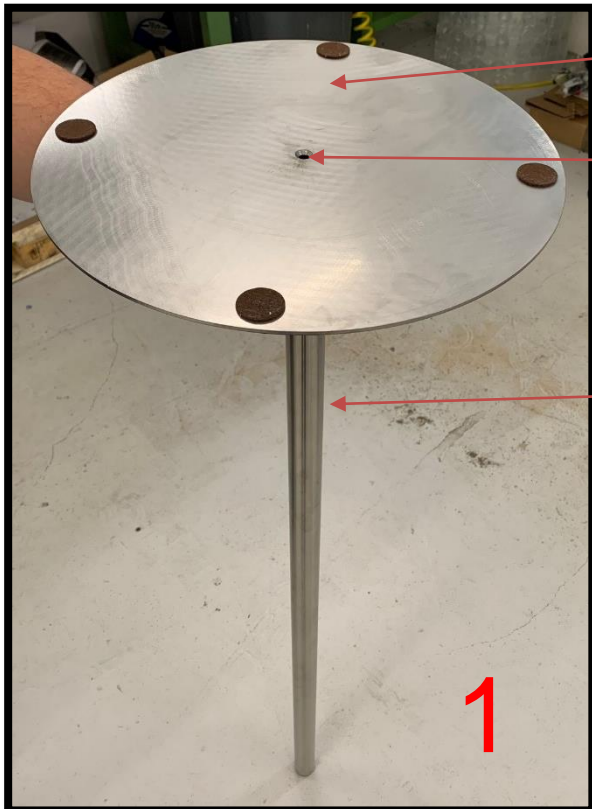


A
B
Ba
C
Ca
Cb
Cc
D

C
O
N
T
E
N
T

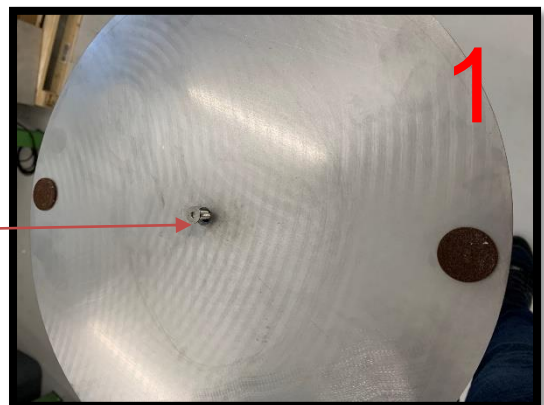
Wenn Sets vormontiert

- Nur Schritt 1+3 nötig
- Schritt 2 vormontiert

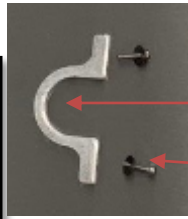


B
Ba
A

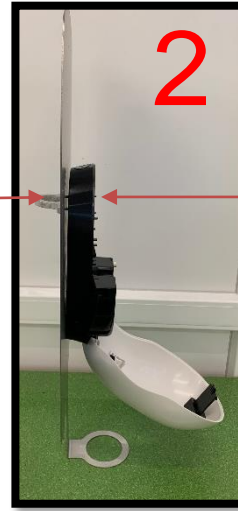
1



Ba

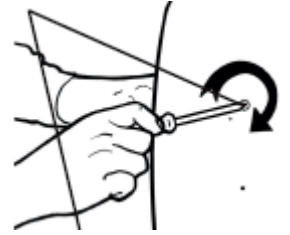


C



Ca

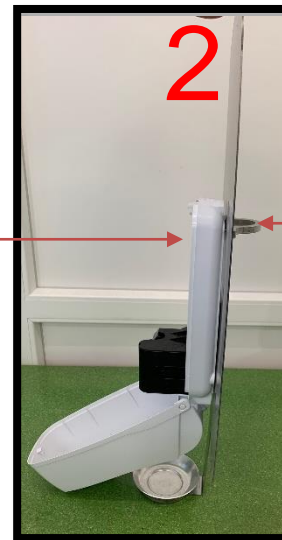
Cb + Cc



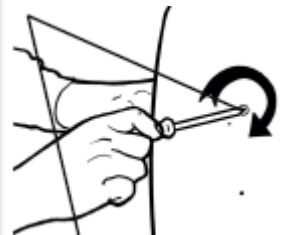
2/3



Cb + Cc



Ca



2/3



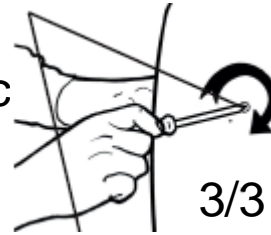
Ernst Hausammann & Co. AG

CH-8010 Zürich
Rautstrasse 19, Postfach
Tel 0800 815 844
Fax +41 44 491 22 11
info@hausammann.com
www.hausammann.com

Ca



Cb + Cc

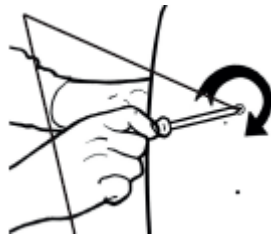


3/3

D

3

Cb + Cc



3/3



3